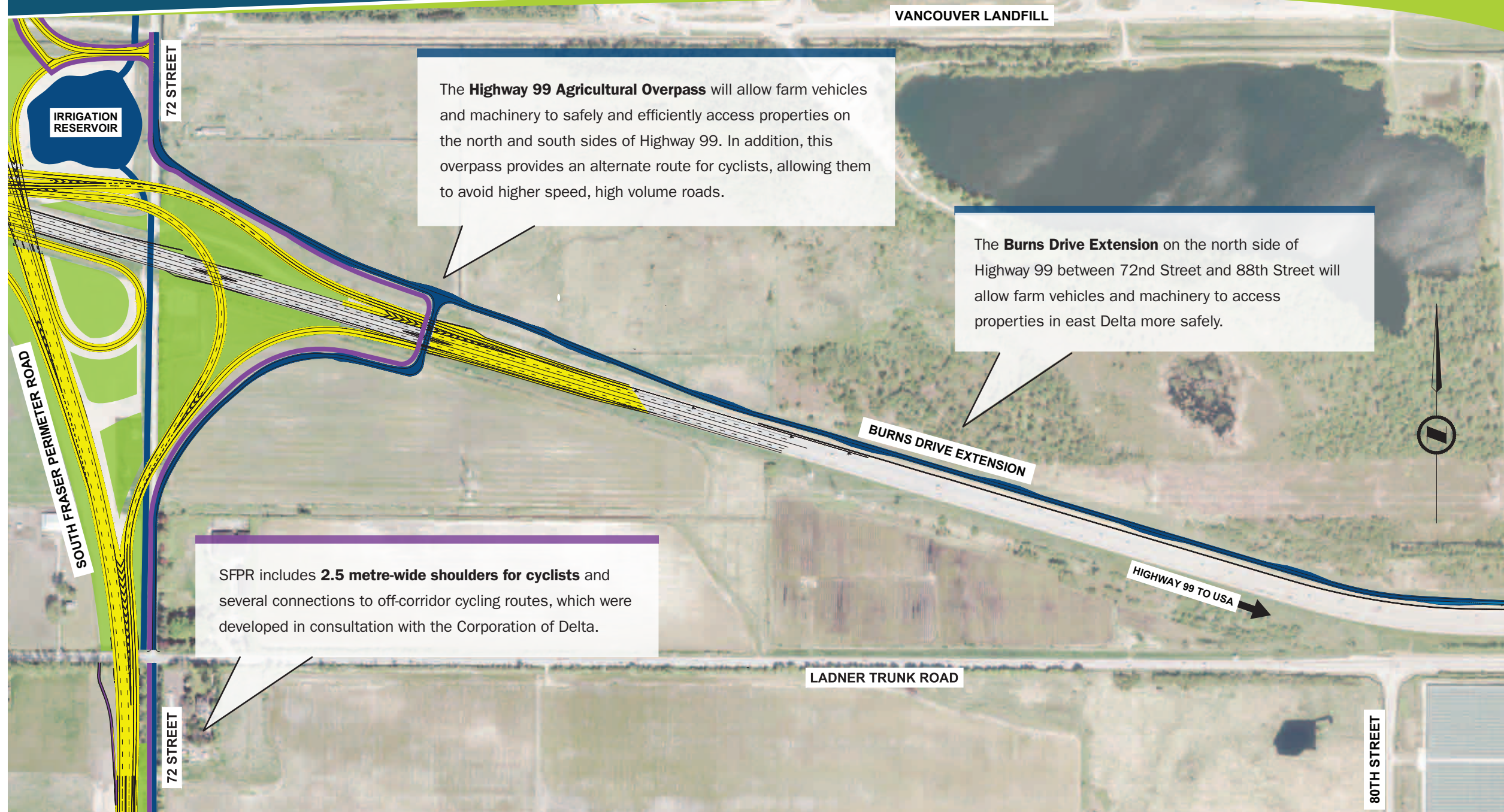


SOUTH FRASER PERIMETER ROAD PROJECT



The **Highway 99 Agricultural Overpass** will allow farm vehicles and machinery to safely and efficiently access properties on the north and south sides of Highway 99. In addition, this overpass provides an alternate route for cyclists, allowing them to avoid higher speed, high volume roads.

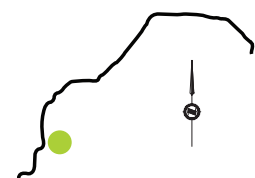
The **Burns Drive Extension** on the north side of Highway 99 between 72nd Street and 88th Street will allow farm vehicles and machinery to access properties in east Delta more safely.

SFPR includes **2.5 metre-wide shoulders for cyclists** and several connections to off-corridor cycling routes, which were developed in consultation with the Corporation of Delta.

■ SFPR and Ramps
 ■ Agricultural Enhancement
 ■ Landscaping
 ■ Cyclist Connection

Project Benefits

- Time savings – travel times will be reduced by up to one-third.
- More than 7000 long-term jobs in Delta and Surrey.
- New municipal development opportunities through efficient access to designated commercial and industrial areas in Delta and Surrey.
- Improved business and redevelopment opportunity through the closure and rehabilitation of landfills.
- 90% less truck traffic on River Road in North Delta.
- 80% less total traffic on River Road in North Delta.
- Port and ferry traffic significantly reduced on Highway 17 through Ladner as through-traffic uses the new SFPR.



SOUTH FRASER PERIMETER ROAD (SFPR)

HIGHWAY 99

SECTION 5