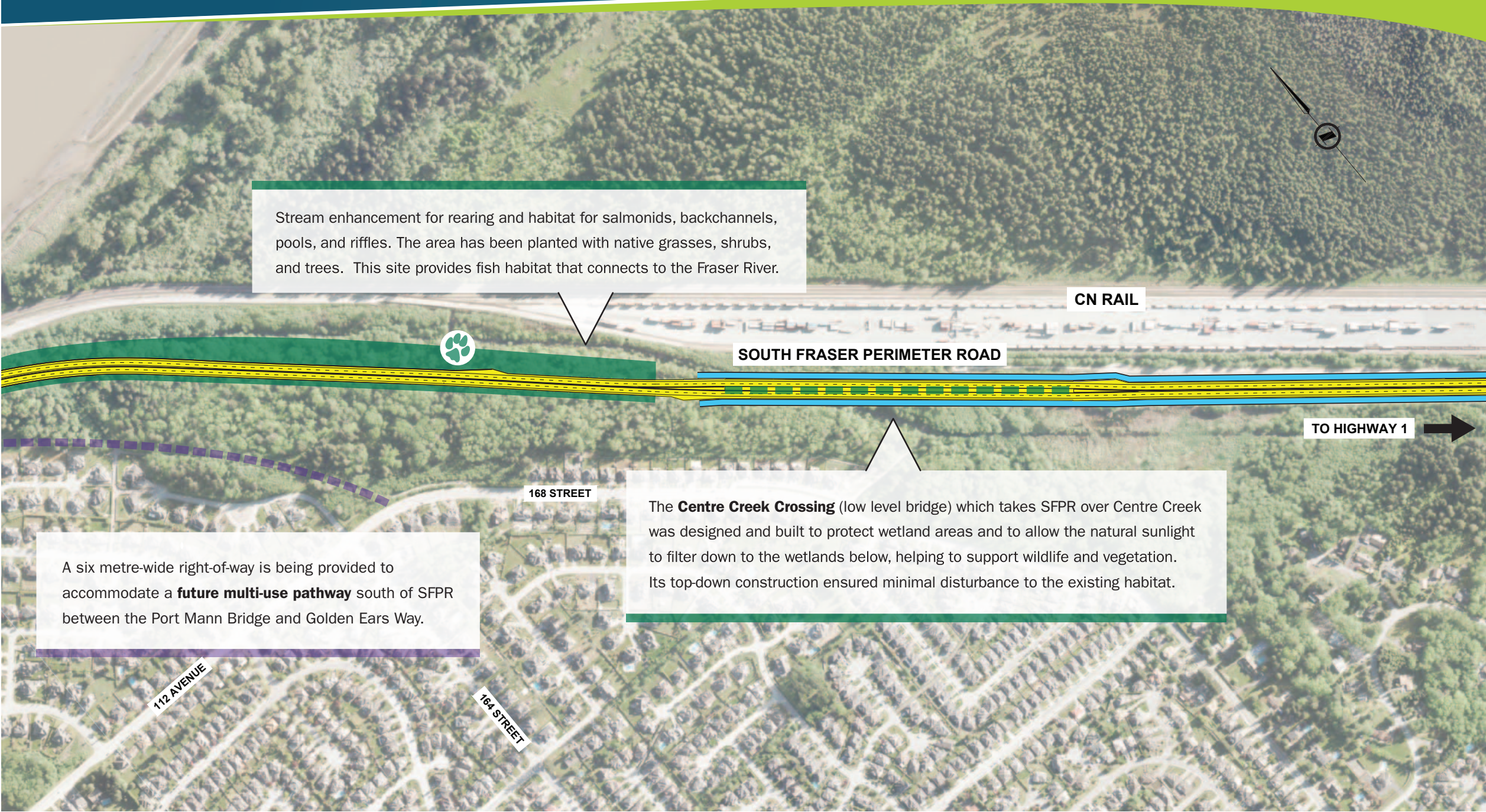


SOUTH FRASER PERIMETER ROAD PROJECT



Stream enhancement for rearing and habitat for salmonids, backchannels, pools, and riffles. The area has been planted with native grasses, shrubs, and trees. This site provides fish habitat that connects to the Fraser River.

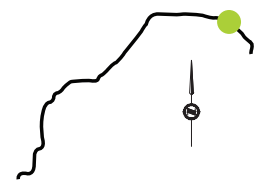
The **Centre Creek Crossing** (low level bridge) which takes SFPR over Centre Creek was designed and built to protect wetland areas and to allow the natural sunlight to filter down to the wetlands below, helping to support wildlife and vegetation. Its top-down construction ensured minimal disturbance to the existing habitat.

A six metre-wide right-of-way is being provided to accommodate a **future multi-use pathway** south of SFPR between the Port Mann Bridge and Golden Ears Way.

SFPR and Ramps
 Quiet Pavement
 Environmental Enhancement
 ♻️ Wildlife Crossing
 Future Multi-use Path

Project Benefits

- Improve safety and reliability.
- Improved international trade competitiveness providing better access to major trade gateways such as Deltaport, Fraser Surrey Docks, CN Intermodal Yard, Canada/US Border crossings, and faster, more reliable travel for port traffic.
- Improved access to Vancouver Island via the Tsawwassen Ferry Terminal, benefitting local and international tourism.
- Improved regional transportation network – this project completes a key corridor that has been planned for more than 30 years and provides improved connections between Highways 1, 15, 91, 99, and 17 as well as the Golden Ears Bridge, Port Mann Bridge, Pattullo Bridge, Alex Fraser Bridge, and the George Massey Tunnel.



SOUTH FRASER PERIMETER ROAD (SFPR)
CENTRE CREEK CROSSING

SECTION 21