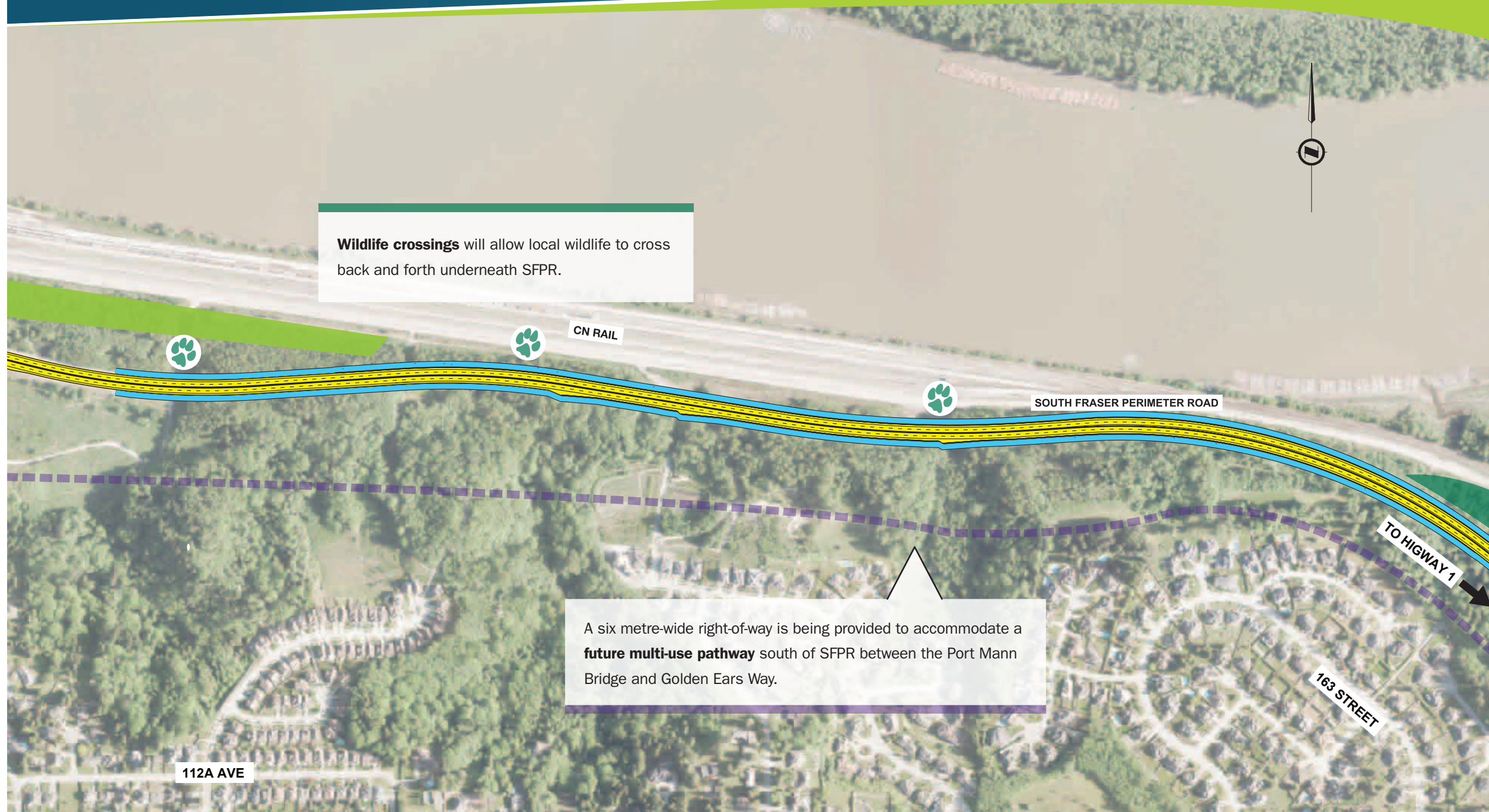


SOUTH FRASER PERIMETER ROAD PROJECT



Wildlife crossings will allow local wildlife to cross back and forth underneath SFPR.

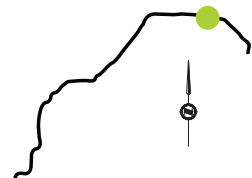
A six metre-wide right-of-way is being provided to accommodate a **future multi-use pathway** south of SFPR between the Port Mann Bridge and Golden Ears Way.

Project Benefits

- More than one million square metres of landscaping.
- More than 25,000 trees throughout the corridor since 2009 with more planting to come.
- Water and streambank enhancements to improve fish habitat.
- New **tidal wetlands** with native shrubs and trees provide nurseries and rearing homes for young salmon and other fish.

SFPR and Ramps
 Quiet Pavement
 Environmental Enhancement
 Landscaping

♻️
 Wildlife Crossing
 Future Multi-use Path



SOUTH FRASER PERIMETER ROAD (SFPR)
EAST OF PORT MANN BRIDGE

SECTION 20