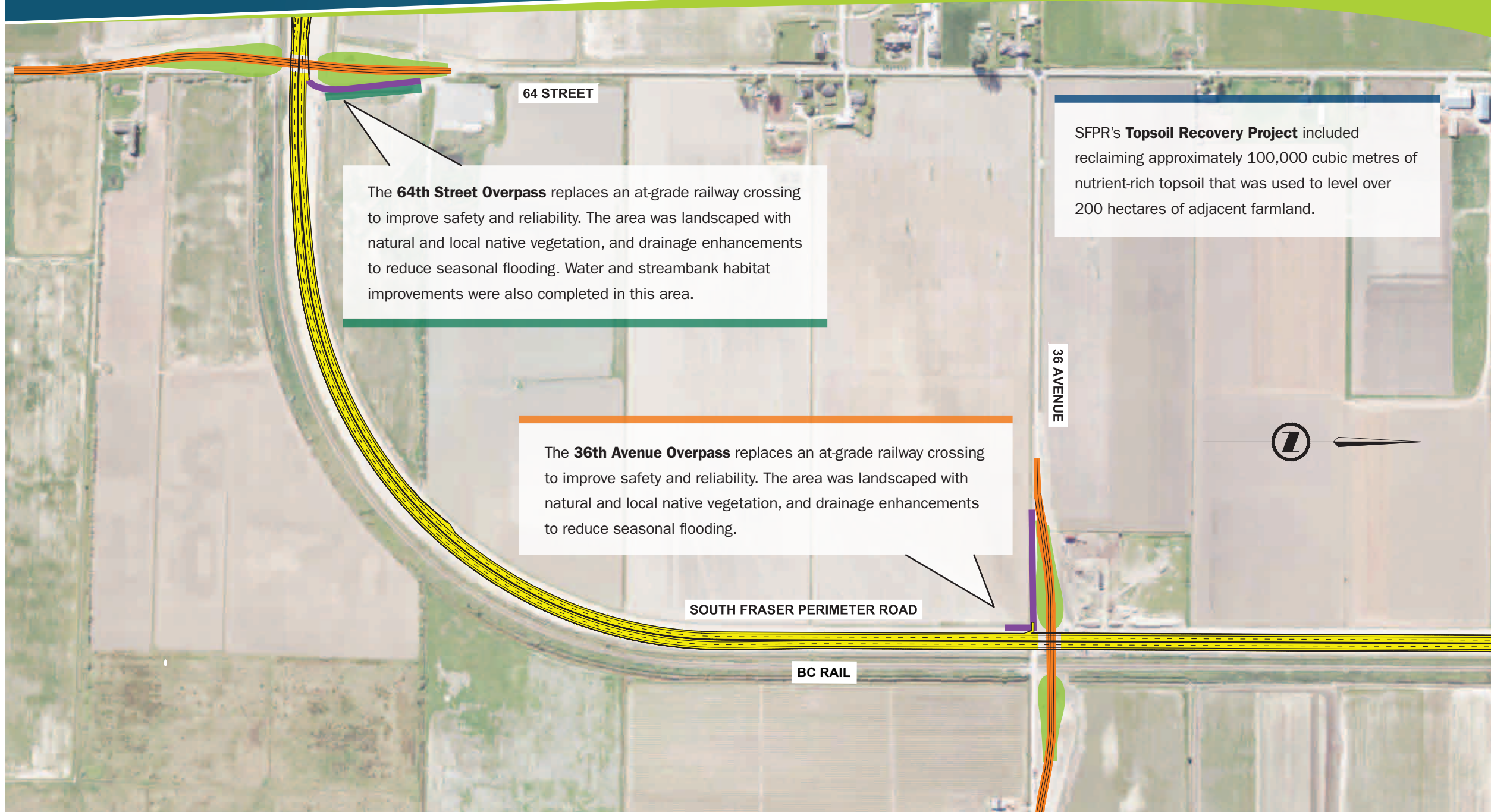


# SOUTH FRASER PERIMETER ROAD PROJECT



The **64th Street Overpass** replaces an at-grade railway crossing to improve safety and reliability. The area was landscaped with natural and local native vegetation, and drainage enhancements to reduce seasonal flooding. Water and streambank habitat improvements were also completed in this area.

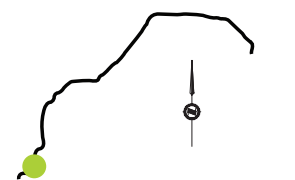
SFPR's **Topsoil Recovery Project** included reclaiming approximately 100,000 cubic metres of nutrient-rich topsoil that was used to level over 200 hectares of adjacent farmland.

The **36th Avenue Overpass** replaces an at-grade railway crossing to improve safety and reliability. The area was landscaped with natural and local native vegetation, and drainage enhancements to reduce seasonal flooding.

## Key Features of This Section

- The **Delta Agricultural Enhancement Strategy** was developed in consultation with the Delta Farmers' Institute, Agricultural Land Commission, Corporation of Delta, and local farmers. It includes:
- \$20 million of irrigation system improvements to bring fresh water to more than 15,000 acres of farmland in Delta.
  - Topsoil recovery project, which reclaimed approximately 100,000 cubic metres of nutrient-rich topsoil that was used to level over 200 hectares of adjacent farmland.
  - Four agricultural overpasses in Delta (28 Avenue, Highway 99, 60th Street, 72nd Street) improve safety and reliability for farmers.
  - The Burns Drive Extension between 88th Street and 72nd Street, which improves access to agricultural properties in east Delta.
  - Level railway crossings at 64th Street and 36th Avenue replaced with overpasses to improve farm vehicle transportation and safety.
  - New access to the Vancouver Landfill from Highway 99 to remove landfill traffic from Burns Drive (more than 400,000 truck trips per year), improving travel for local traffic and farm vehicles.
  - Improved drainage infrastructure to reduce flooding.

  SFPR and Ramps  
   Municipal Road  
   Landscaping  
   Agricultural Enhancement  
   Environmental Enhancement  
   Cyclist Connection



**SOUTH FRASER PERIMETER ROAD (SFPR)**  
36<sup>TH</sup> AVENUE OVERPASS

**SECTION 2**