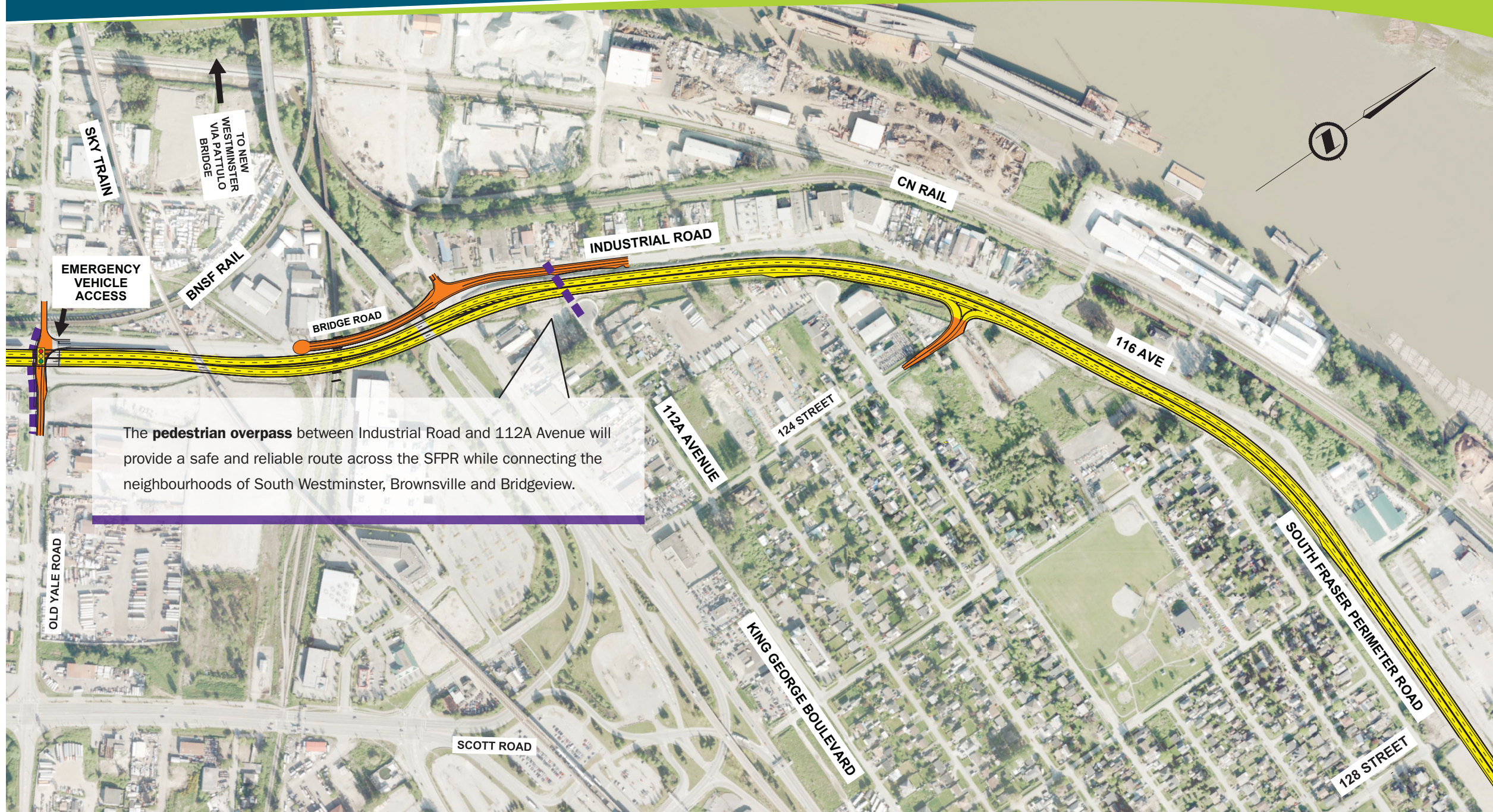


SOUTH FRASER PERIMETER ROAD PROJECT

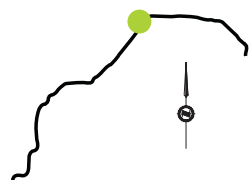


The **pedestrian overpass** between Industrial Road and 112A Avenue will provide a safe and reliable route across the SFPR while connecting the neighbourhoods of South Westminster, Brownsville and Bridgeview.

SFPR and Ramps
 Municipal Road
 Pedestrian Overpass

Project Benefits

- Improve safety and reliability.
- Time savings – travel times will be reduced by up to one-third.
- More than 3500 long-term jobs in Surrey.
- New municipal development opportunities – through efficient access to designated commercial and industrial areas in Surrey.
- Improved international trade competitiveness – providing better access to major trade gateways such as Deltaport, Fraser Surrey Docks, CN Intermodal Yard, Canada/US Border crossings, and faster, more reliable travel for port traffic.
- Improved access to Vancouver Island via the Tsawwassen Ferry Terminal, benefitting local and international tourism.
- Improved regional transportation network – this project completes a key corridor that has been planned for more than 30 years and provides improved connections between Highways 1, 15, 91, 99, 17, and related Fraser River crossings.



SOUTH FRASER PERIMETER ROAD (SFPR)

PATTULLO BRIDGE

SECTION 16