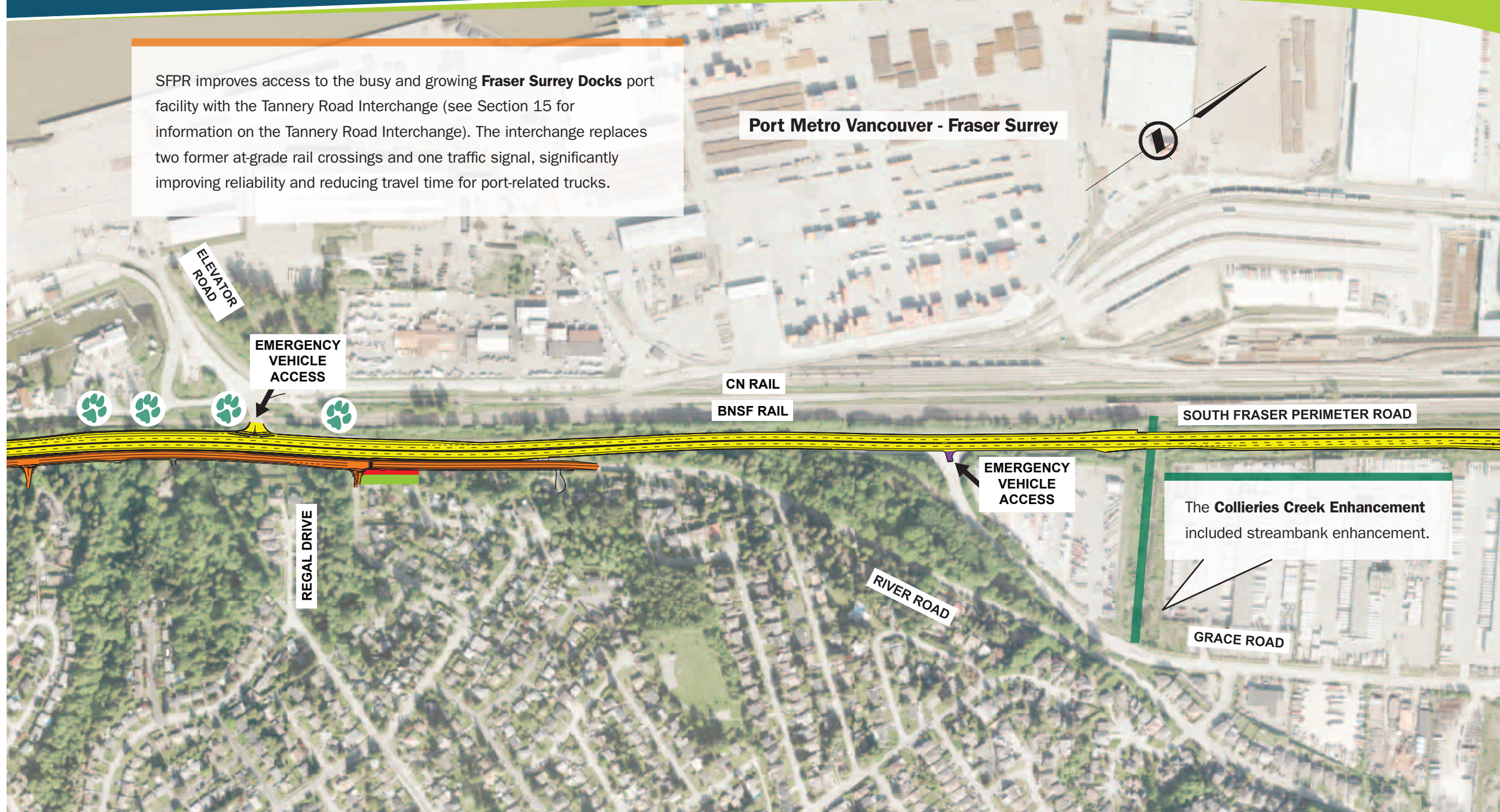


SOUTH FRASER PERIMETER ROAD PROJECT

Project Benefits

- Improve safety and reliability.
- Time savings – travel times will be reduced by up to one-third.
- More than 3500 long-term jobs in Surrey.
- New municipal development opportunities – through efficient access to designated commercial and industrial areas in Surrey.
- Improved international trade competitiveness – providing better access to major trade gateways such as Deltaport, Fraser Surrey Docks, CN Intermodal Yard, Canada/US Border crossings, and faster, more reliable travel for port traffic.
- Improved access to Vancouver Island via the Tsawwassen Ferry Terminal, benefitting local and international tourism.
- Improved regional transportation network – this project completes a key corridor that has been planned for more than 30 years and provides improved connections between Highways 1, 15, 91, 99, 17, and related Fraser River crossings.

SFPR improves access to the busy and growing **Fraser Surrey Docks** port facility with the Tannery Road Interchange (see Section 15 for information on the Tannery Road Interchange). The interchange replaces two former at-grade rail crossings and one traffic signal, significantly improving reliability and reducing travel time for port-related trucks.



Port Metro Vancouver - Fraser Surrey

CN RAIL
BNSF RAIL

SOUTH FRASER PERIMETER ROAD

EMERGENCY VEHICLE ACCESS

The **Collieries Creek Enhancement** included streambank enhancement.

GRACE ROAD

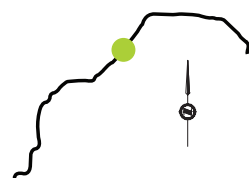
ELEVATOR ROAD

EMERGENCY VEHICLE ACCESS

REGAL DRIVE

RIVER ROAD

SFPR and Ramps
 Municipal Road
 Noise Fence
 Landscaping
 Environmental Enhancement
 Wildlife Crossing
 Cyclist Connection



SOUTH FRASER PERIMETER ROAD (SFPR)
PORT METRO VANCOUVER – FRASER SURREY

SECTION 14